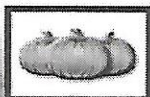
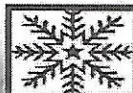


COLUMBIA BOROUGH

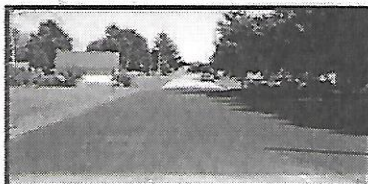


FALL/WINTER 2013 NEWSLETTER

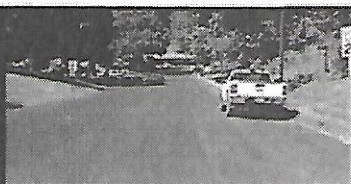


**GUESS WHAT THE HIGHWAY DEPARTMENT
HAS BEEN DOING???**

PAVING!!! CHECK OUT THESE NEWLY PAVED STREETS!!!



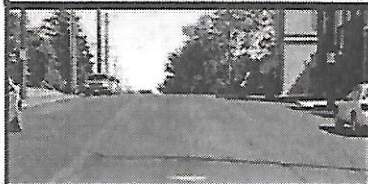
CENTRAL AVENUE



NORTH 5TH ST.



NORTH 4TH ST.



MANOR STREET



8TH & SPRUCE ST.



POPLAR STREET



FROM THE MAYOR'S OFFICE



SMOKE DETECTORS SAVE LIVES!

Almost two-thirds of home fire deaths resulted from fires in homes with no smoke alarms or no working smoke alarms. When there is a fire, smoke spreads fast and you need smoke alarms to give you time to get out.

- Install smoke alarms in every bedroom, outside each separate sleeping area and on every level of the home, including the basement. Interconnect all smoke alarms throughout the home. When one sounds, they all sound.
- Test alarms at least monthly by pushing the test button.
- Smoke rises; install smoke alarms following manufacturer's instructions high on a wall or on a ceiling. Save manufacturer's instructions for testing and maintenance.
- Replace batteries in all smoke alarms at least once a year. If an alarm "chirps", warning the battery is low, replace the battery right away.
- Be sure the smoke alarm has the label of a recognized testing laboratory
- If cooking fumes or steam sets off nuisance alarms, replace the alarm with an alarm that has a "hush" button. A "hush" button will reduce the alarm's sensitivity for a short period of time.

FREE Smoke Detectors are available at the following Fire Departments:

Susquehanna Fire and Rescue, "Hambones" - Tenth and Manor Streets - 684-5844

Columbia No. 1 Fire Department - 137 South Front Street - 684-5100

Columbia Consolidated Fire Department - 265 S. 10th Street - 684-2695

Dates to Remember

Annual Bridge Bust

Saturday 10/5/13

9am-3pm

Yard Waste Curbside

Pickup Ends

Monday 10/14/13

Leaf Pickup Begins

Monday 10/21/13

(follows street sweeper route)

Mardis Gras Parade

Thursday 10/24/13

7pm

Trick or Treat

Thursday 10/31/2013

6-8pm

MAG Fall Flash 5K

Saturday 11/2/13

7:30am-10:30am

Salem UCC 5K Run

Saturday 11/9/13

7am-10am

STREET SWEEPING NOTICE

Regardless of whether the street sweeper is running or not, residents are required to move their vehicles during the times posted on the signs. You may be ticketed if you do not move your vehicle during the posted hours.

Columbia Borough Residential and Commercial Recycling

DID YOU KNOW? That Act 101 of 1988 and Columbia Borough Code Chapter 18, Article II, Section 9 require that Columbia Borough residents and businesses recycle. The more tonnage recycled, the more money the Borough earns which, in turn, helps to reduce the amount of tax dollars the Borough needs to collect from its property owners. Please recycle whenever possible.

ITEMS THAT ARE REQUIRED TO BE RECYCLED:



Glass - Clear, Green and brown glass bottles/jars



Steel Cans - All food and beverage cans made from aluminum, steel or tin



Plastic - Bottles, jars and jugs only—anything that has a neck



Paper - Newspapers, Office Paper, Junk Mail, Magazines



Batteries - Battery bags are available at the Borough Office and should be put in recycle bins



White Goods - Large appliances



Cardboard - Boxes (Cereal boxes, Pizza boxes, Tissue boxes, Paper towel/Toilet paper rolls etc...)

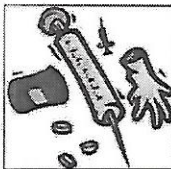


Yard Waste - Leaves, Shrubs, Grass, Small Tree Limbs

Preparing Recyclable Materials for the Bin:

- Recycle only plastic containers that have a "neck". (Plastic bags, Cups, Bowls and Butter tubs are not recyclable)
- Metal/glass containers should not be broken or flattened. Plastic items may be flattened.
- Remove all metal lids and rinse containers thoroughly. Labels do not need to be removed.
- Keep newspapers separate by tying in bundles with twine or placing in a brown paper grocery bag. Do not lay them with bottles/cans or use plastic bags or wrap. Avoid putting newspapers out when it is raining or windy.
- Place paper, magazines and newspapers together. Please do not wrap in plastic or put in plastic bags.

Medical Waste is not recyclable:

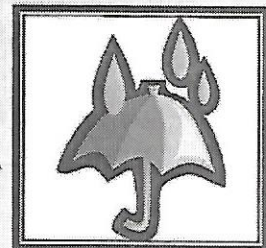


Place hypodermic needles in an empty plastic detergent bottle with a screw-top lid. Put in with your other trash.

Soiled bandages, disposable sheets and medical gloves should be double-bagged in plastic bags and fastened securely before putting them in with your other trash.

RAIN is important for replenishing drinking water supplies, recreation, and healthy wildlife habitats but can become a problem when pollutants like pesticides, organic impurities, asbestos, chlorine and animal feces get into water supplies. The following are ways you can help prevent storm water pollution:

- Dispose of hazardous substances such as oil, cleaning supplies and paint; never pour them down any part of the storm sewer system, and report anyone who does.
- Dispose of trash in the proper receptacles.
- Use pesticides, fertilizers and herbicides properly and efficiently to prevent excess runoff.
- Pick up after pets and dispose of their waste properly. No matter where pets make a mess in the backyard or at the park storm water runoff can carry pet waste from the land to the storm sewer system to a stream.
- Report any discharges from storm water outfalls during times of dry weather which is a sign that there could be a problem with the storm sewer system.
- Look for signs of soil and other pollutants, such as debris and chemicals, leaving construction sites that could impact storm water runoff to your community.
- Store materials that could pollute storm water indoors and use containers for outdoor storage that do not rust or leak to eliminate exposure of materials to storm water.
- Install innovative storm water practices on residential property, such as rain barrels or rain gardens that capture storm water and keep it on site instead of letting it drain away into the storm sewer system.



Biodegradable Bags & Recycle Bins

Biodegradable Bags are available for purchase at the Borough Office which is located at 308 Locust Street for \$.75 each or 3 for \$2.00. Recycle bins are also available for \$8.00 each.

Telephone Book Recycling

In order to save money, the Borough will no longer provide a dumpster for phone book recycling. Phone books should be placed in your recycle bin and placed at the curb on your regularly scheduled trash day.

Trash/Rubbish

Trash and Rubbish are required to be placed in cans with lids and/or in tied bags and placed curbside. No loose trash/rubbish is permitted. Residents may be fined for any litter caused by trash or rubbish not in proper containers.

Borough Farm

The Borough Farm is located on Blue Lane (off River Road just past Plane Street) and is open for drop off of yard waste year round on the second Saturday of each month from 8am-Noon.

RECYCLING FUN – WORD FIND

L	E	A	V	E	S	B	T	A	Z	R	L	O	O	R
P	O	I	B	C	V	W	A	B	J	X	N	K	W	E
S	A	L	U	M	I	N	U	M	Q	P	A	P	E	R
E	B	R	T	W	H	I	Y	H	E	S	G	Y	E	T
U	I	N	Q	G	U	T	P	O	V	W	I	U	D	A
I	O	A	P	P	L	I	A	N	C	E	S	E	S	C
J	D	I	A	Y	R	R	D	J	O	U	T	X	A	O
R	E	V	T	S	Q	E	E	A	L	D	I	Y	R	M
E	G	G	L	A	S	S	F	K	U	R	C	Q	I	M
C	R	I	S	E	D	K	O	R	M	F	K	N	W	E
Y	A	R	D	W	A	S	T	E	B	U	S	T	O	R
C	D	P	R	W	V	U	P	S	I	X	S	G	P	C
L	A	Y	G	Q	O	R	T	I	A	Y	T	D	L	I
E	B	I	T	H	C	H	G	D	I	Q	N	E	A	A
B	L	A	E	B	A	T	T	E	R	I	E	S	S	L
I	E	O	W	U	R	X	W	N	E	T	W	J	T	O
N	T	Y	S	F	D	Y	I	T	C	R	S	I	I	T
T	I	R	E	S	B	P	G	I	Y	W	P	Y	C	U
Y	I	P	F	I	O	R	S	A	C	C	A	N	S	G
R	S	D	E	S	A	T	P	L	L	E	P	O	D	W
U	E	H	O	A	R	Y	U	A	E	J	E	H	Y	F
D	Y	F	R	D	D	S	W	D	P	U	R	R	T	P

ALUMINUM
NEWSPAPER
YARDWASTE
COLUMBIA
STICKS
COMMERCIAL
TIRES
GLASS
TWIGS
LEAVES
WEEDS

CARDBOARD
RESIDENTIAL
APPLIANCES
PAPER
BATTERIES
PLASTICS
BIODEGRAABLE
RECYCLE
CANS
RECYCLE BIN

Still Going Strong After 60 Years!

You will not find her on any of the most toured spots in Columbia Borough. Most residents only ever heard bad things about her. Years ago, when she was first conceived, it was out of terms of necessity. Like any other new thing, she was shiny and pretty. State of the art design back in 1952. Over the years, very little upgrades were needed to keep her operational.

In the previous six decades she has been managed by numerous individuals. Some treated her with the respect she deserved, others as just another evil necessity. But still she functioned.

I speak of this valuable resource out of respect. I am involved in every aspect of her operation. I speak of this vital function as if it were a living thing. In all practicality, it is a very, living, breathing, reproducing, and yes dying every single day of the year. She operates 24 hours a day, 7 days a week, 365 days a year. Like a mailman, neither rain, snow, sleet nor dead of night stops her performing her essential duty.

She is the biggest recycling operation in the Borough of Columbia for the past 50 years. Each month she recycles over 20,000,000 million gallons of our most vital resource.

The by-product of her very efficient operation is used by local farmers as a nutrient supplement for crops and soils. Both her discharge and by-product are one of the most regulated items, and watched by Local, State, and Federal Government agencies. She takes all that Mother Nature and mankind put through her, she still perseveres!

Now what can I be talking about? It's Something that every resident needs on a daily basis. Most visitors to our local historic sites, stores, shops, factories, and any other place where people gather to work, have a fun and a relaxing time.

Well here it is, your local SEWER PLANT! That old name says very little. In the modern terms, you're local Wastewater Treatment Facility. Fancier name sounds more appealing.

In closing, here is a thought to ponder! We drink the same water the dinosaurs drank. The water on planet Earth has always been here, and hopefully always will be. We do not make new water! It is constantly recycled.

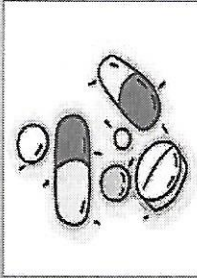
Submitted by: Charlie Moll/Wastewater Manager

Check out our website!
www.columbiapa.net

POLICE DEPARTMENT NOTES

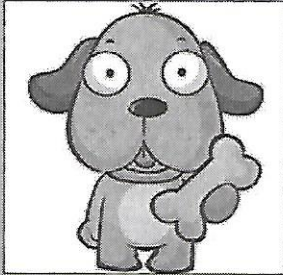
PRESCRIPTION MEDICATIONS

National statistics indicate that adolescent prescription drug abuse is on the rise. Locally, Law Enforcement is seeing those statistics to be accurate. Often times the young abusers acquire their first pill from inside their own residence such as a family medicine cabinet. The Columbia Borough Police Strongly urge anyone with outdated or unused prescription medications to properly discard the pills. Addicts often resort to crime to sustain their drug use or other opiates such as heroin when pills are in little supply. Residents with questions or concerns should feel free to contact the Columbia Police at 717-684-7735. Let's work together to prevent drug abuse.



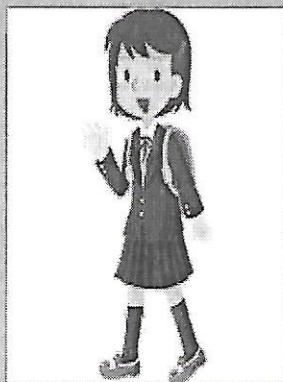
STRAY DOGS

The Borough of Columbia continues to struggle with a large number of stray dogs. From January to September 2013, 38 dogs were recovered by Columbia Borough Police Officers from the streets of the Borough. In response to the problem, the Borough modified its Stray Dog Ordinance and Police procedures. Therefore, pet owners can be assessed a stray dog fee, along with expenses for pet boarding and cited for any violation of State or Local Law. Dog owners are responsible for their pets and must prevent their escape. In addition, all dogs must have a current dog license and rabies tag displayed. A secondary safe and effective method for pet reunification with their owner is to have a Micro Chip implanted by a Veterinarian. Please help to reduce this public safety issue and drain on Police resources.



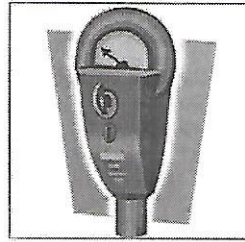
SCHOOL STUDENT DROP OFF

Parents are reminded to refrain from double parking when dropping off their children at Park and Taylor Schools. In addition, children must be dropped off curbside and not expected to cross opposing traffic. High School Parents are reminded to drop off students at the designated "drop-off" point in the area of the cafeteria. No student shall be dropped off in front of the school or any of the hills.



NEW!!!!

METERED PARKING LOT NOW AVAILABLE DOWNTOWN



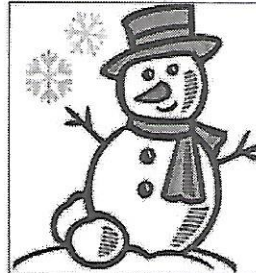
A new parking lot has been opened at the corner of Avenue H and Short Avenue in the Downtown. Both metered and permit parking are available in this lot.

The cost for monthly permit parking is \$30 per month for each permit if purchased prior to the first of the month, \$25 per month if paid at least 6 months in advance, and if paid after the first of the month the fee will be pro-rated at \$1.00 per day. Permits can be purchased at the Borough Office located at 308 Locust Street.

Parking Meters have been placed in this parking lot as well. The fee for parking meters is currently \$.25 per 1/2 hour with a maximum of 2 hours but will be increasing to \$.50 per 1/2 hour within a few weeks.

CODES DEPARTMENT

Snow Removal



Tenants, owners or persons in charge of any property fronting on or adjoining any street in the Borough of Columbia are required to clear a pathway of at least three

feet in width on the sidewalk in front of or adjoining property within eight hours after the snow has ceased to fall. If the snow has ceased to fall between dusk and dawn, the pathway shall be cleared before 10:00 a.m. the following day. Snow cleaned from the pathway shall not be deposited in the street after the street has been plowed. The penalty for non-compliance could result in a fine of not more than \$600, plus costs of prosecution.

PHONE NUMBERS TO REMEMBER

Emergency - 911

Columbia Borough Police - 717-684-7735

Comcast Cable - 1-800-266-2278

Columbia Public Library - 717-684-2255

Susquehanna Valley Chamber of Commerce
717-684-5249

District Magistrate - 717-684-2761

Susquehanna Valley EMS - 717-684-2400